

**ENVIRONMENTAL MANAGEMENT AND
SUSTAINABILITY PANEL**

**CHAIR: Professor Phil Vickerman, PVC Student
Experience**

1. STRATEGIC CONTEXT

The Panel supports the following enablers for delivery of the university's Strategic Plan 2017/2022:

- A university committed to financial sustainability and strategic investment in the future
- A university with an estate that fosters a sense of community, supports high quality activity and operates sustainably
- A university that recognises the importance of good governance to support the delivery of its strategic goals.

2. GENERIC RESPONSIBILITIES

- To advocate and drive the continual improvement of environmental management and sustainable development at the University
- To ensure that the activities and decisions of the Panel are aligned with the priorities contained within the LJMU Strategic Plan 2017-2022
- To oversee progress of relevant strategic Key Performance Indicators
- To ensure that equality and diversity matters are fully considered, addressed and embedded within the activities and decisions of the Panel
- To identify risks and opportunities associated with the proposals, decisions and other activities which fall within the remit of the Panel
- To ensure terms of reference are reviewed on an annual basis, along with the Panel's effectiveness
- To ensure any changes to the terms of reference are reported to ELT for approval
- To ensure the Panel complies with the standards and guidelines provided by the University's Secretariat for reporting and presentation
- Any other generic responsibilities, aims and objectives.

3. SPECIFIC RESPONSIBILITIES

The Environmental Management and Sustainability Panel has responsibility to support and monitor compliance with the aims of the University's Environmental Management and Sustainability Policy, and to track the action plans that deliver the objectives within the Environmental Management and Sustainability Strategy, as follows:

- **1. Environmental protection:** LJMU commits to preventing or mitigating our adverse environmental impacts from our activities

- **2. Environmental enhancement:** LJMU will seek to take advantage of identified beneficial environmental opportunities
- **3. Compliance:** LJMU will comply with all relevant Global, International and UK Government environmental directives and legislation; and will meet its obligation to meet other requirements such as those laid out through the Higher Education Funding Council for England (HEFCE) and local authorities
- **4. Continual improvement:** LJMU commits to continual improvement – aiming for greater performance when targets are met and managing significant environmental impacts, steering progress toward consideration of the International Organization for Standardization’s Environmental Excellence certification (ISO 14001)
- **5. Monitoring and management:** LJMU will measure and monitor its progress against set targets, driving good practice across the sector and acting as a leader in higher education. We will establish KPI reporting, redefining targets and the Environmental Management and Sustainability Policy, as appropriate

The Panel supports the John Moores Students’ Union (JMSU) with its environmental management and sustainability initiatives.

4. CONSTITUTION

The constitution of the Panel is detailed below:

4.1 Reporting and Membership

Reporting to:	Executive Leadership Team (ELT) Minutes of meetings of the Panel are shared with the Climate Change Panel and vice-versa.
Reporting Committees:	
Working Panels/Groups:	

	Job Title/Representative	Title and Name
Chair	PVC Student Experience	Professor Phil Vickerman
Secretary	Team Co-ordinator – SHE Department	Paula Quirk
Members	Energy Manager	Nia Williams
	Head of Campus Support, Facilities	Paul Bradford
	Head of Safety, Health and Environment (ex-officio)	John Gillin
	Safety, Health and Environment Adviser	Steve Fisher
	Senior Development Manager, Opportunities, JMSU	Sarah Latham
	Tony Seasman	Project Manager, Clean Growth UK
Faculty and Division Representatives	Head of Operations, Arts, Professional and Social Studies	Lyndsey Philip
	Head of Operations, Liverpool Business School	Amanda Stewart-Reilly
	Head of Operations, Engineering and Technology	Sara Rioux
	Head of Operations, Science	Aly Leigh
	Head of Professional Standards, Health	James Evans (interim representative)
	Procurement Manager	Kathy Houghton
Co-opted Members	Director, Built Environment	Professor Mike Riley
	Director, Biological and Environmental Sciences	Dr Jason Kirby

	PVC, Faculty of Business and Law	Timothy Nichol
	PVC, Faculty of Science	Professor Laura Bishop

The Panel will be empowered to co-opt further members with specialist knowledge, to assist as necessary, and to invite guest speakers to make presentations on specific topics.

The Panel will invite interested parties to attend meetings or those parts of meetings of relevance to them.

Members have equal voting rights, but the Chair has the casting vote.

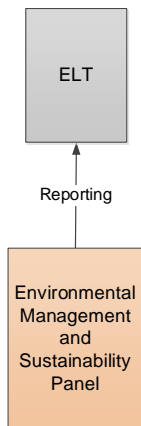
4.2 Quorum

To ensure that the Environment and Sustainability Panel is quorate, meetings will only proceed if the Chair (or nominated Deputy from the membership of the Panel acting in their stead) plus four Panel members are present.

4.3 Frequency

The Panel will meet for a minimum of three times per year.

Additional meetings will be convened, as may be deemed necessary, at the Chair’s discretion.



APPROVED BY ELT: REGISTRAR AND CHIEF OPERATING OFFICER, 10th June 2022

DATE OF NEXT REVIEW: [MARCH – JULY ANNUALLY]